



Thames Road, London, W4 3QS

£895,000

**WHITMAN & CO.**

SALES · LETTINGS · COMMERCIAL

- Master bedroom with luxury ensuite
- 19' Dual aspect reception room
- 14' kitchen/breakfast room
- Secure, gated off-street parking space

- Two further bedroms
- Private terraced garden
- Second reception/fourth bedroom

Tenure - Freehold  
Local Authority - Hounslow  
Council Tax - Band G

## THE PROPERTY

An extremely adaptable freehold home and former Police Station offering exceptional space and light in the sought-after and historic Strand on the Green Area.

The property includes a principal bedroom with a luxury ensuite, two further bedrooms, a large loft, a shower room, a 19' dual aspect reception room with French windows onto a private terraced garden, 14' kitchen/breakfast room, a second reception room/fourth bedroom, and a secure gated off-street parking space.

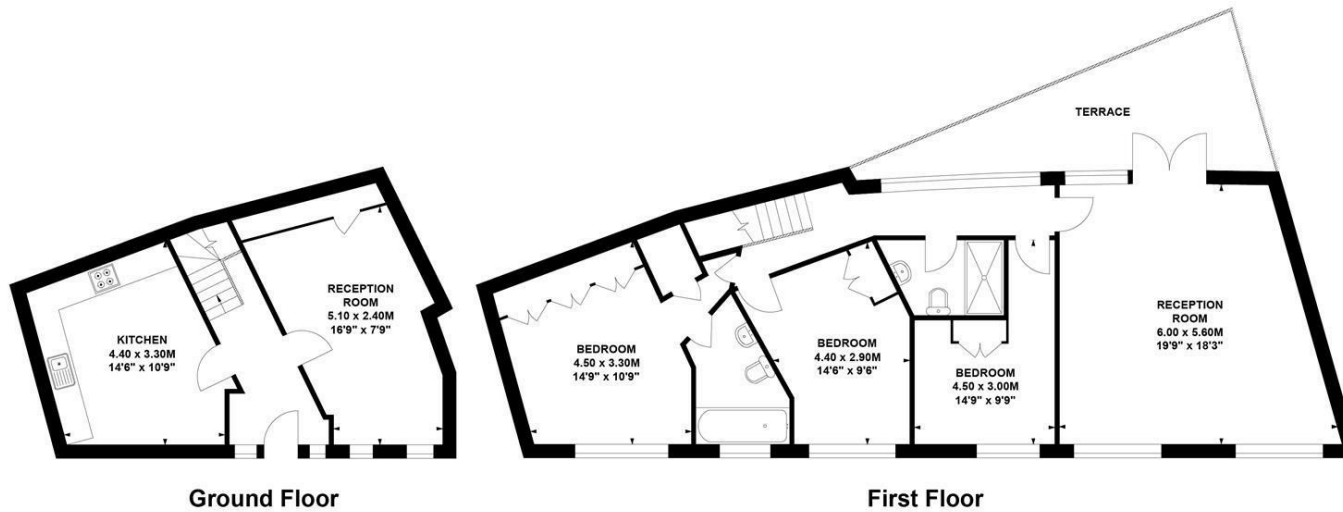
Ideally situated opposite the River Thames, with its Historic walks and Gastro Pubs and access to numerous transport facilities. Viewing highly recommended.

## Thames Road, W4

Approximate Gross Internal Area  
127.02 sq m / 1367 sq ft

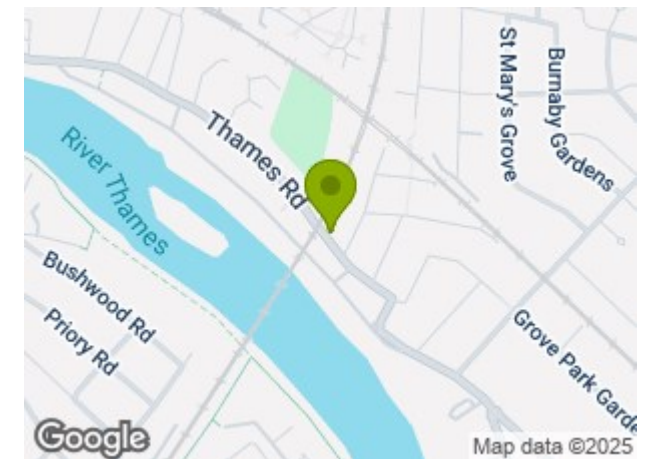


Key :  
CH - Ceiling Height



Not to scale, for guidance only and must not be relied upon as a statement of fact.  
All measurements and areas are approximate only

## SITUATION



5-7 Turnham Green Terrace, Chiswick, London, W4 1RG

Tel 020 8747 8800

E-mail [sales@whitmanandco.com](mailto:sales@whitmanandco.com)

Website [www.whitmanandco.com](http://www.whitmanandco.com)

